



Case Studies

BAM - Scrubs Lane and Mitre Bridge works

March 2023 to October 2024

- Provision of full Turnkey OLE installation team inclusive of CRE –C
- Mitre Bridge – Re-sectioning of OLE and Modification of Earthing and Bonding system
- Scrubs Lane – replacement of failing OLE switching structure and re-anchoring of wire runs
- Works on both projects undertaken within highly constrained access windows
- Testing and commissioning of the Modified OLE
- All OLE installation and commissioning works
- All Earthing and Bonding works
- Material supply and fabrication
- Value £550K
- NR12

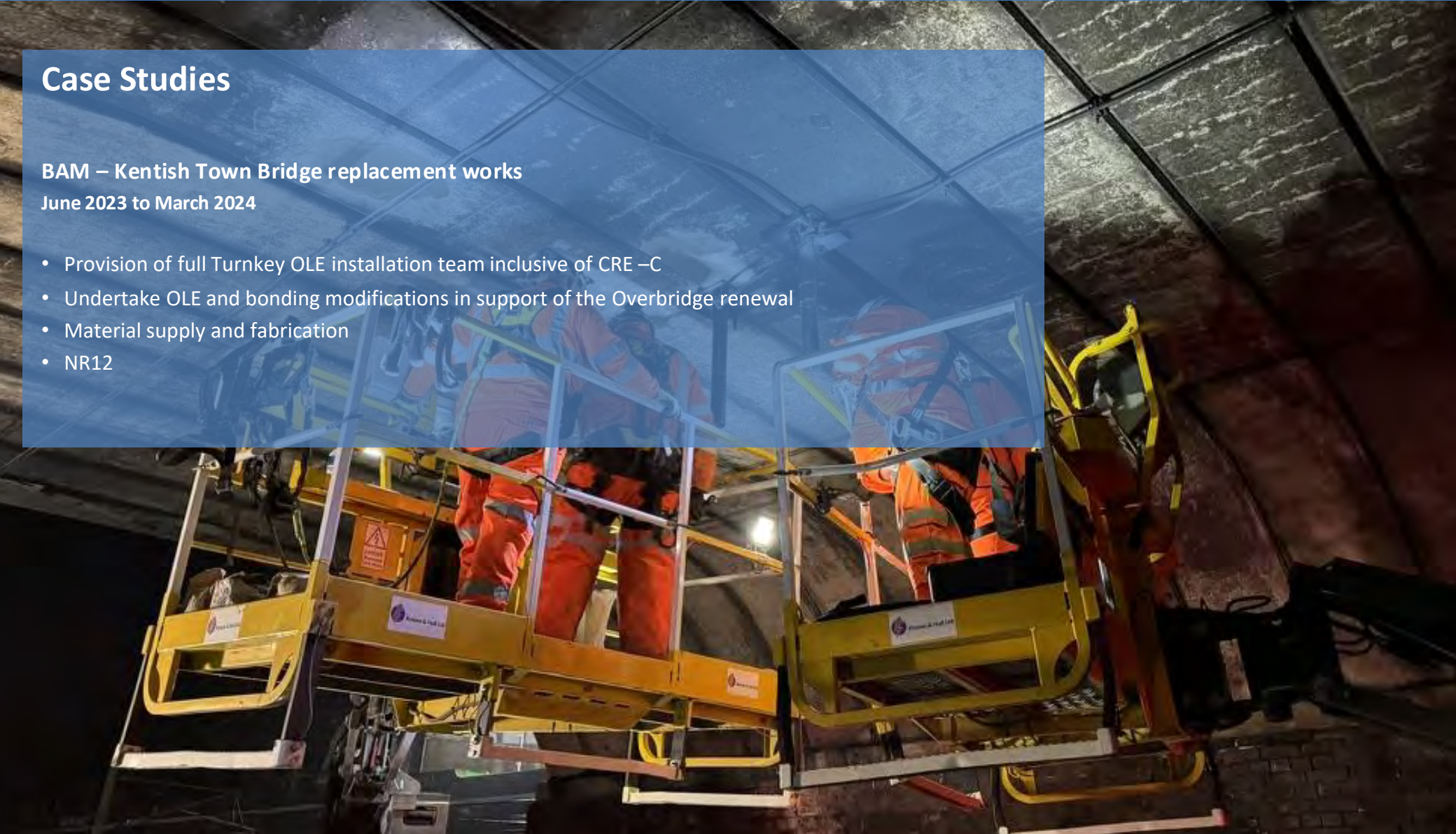


Case Studies

BAM – Kentish Town Bridge replacement works

June 2023 to March 2024

- Provision of full Turnkey OLE installation team inclusive of CRE –C
- Undertake OLE and bonding modifications in support of the Overbridge renewal
- Material supply and fabrication
- NR12





Case Studies

Story Rail - Lindsell's Level Crossing OLE support for Installation of new Footbridge

November 2020 to Feb 2023

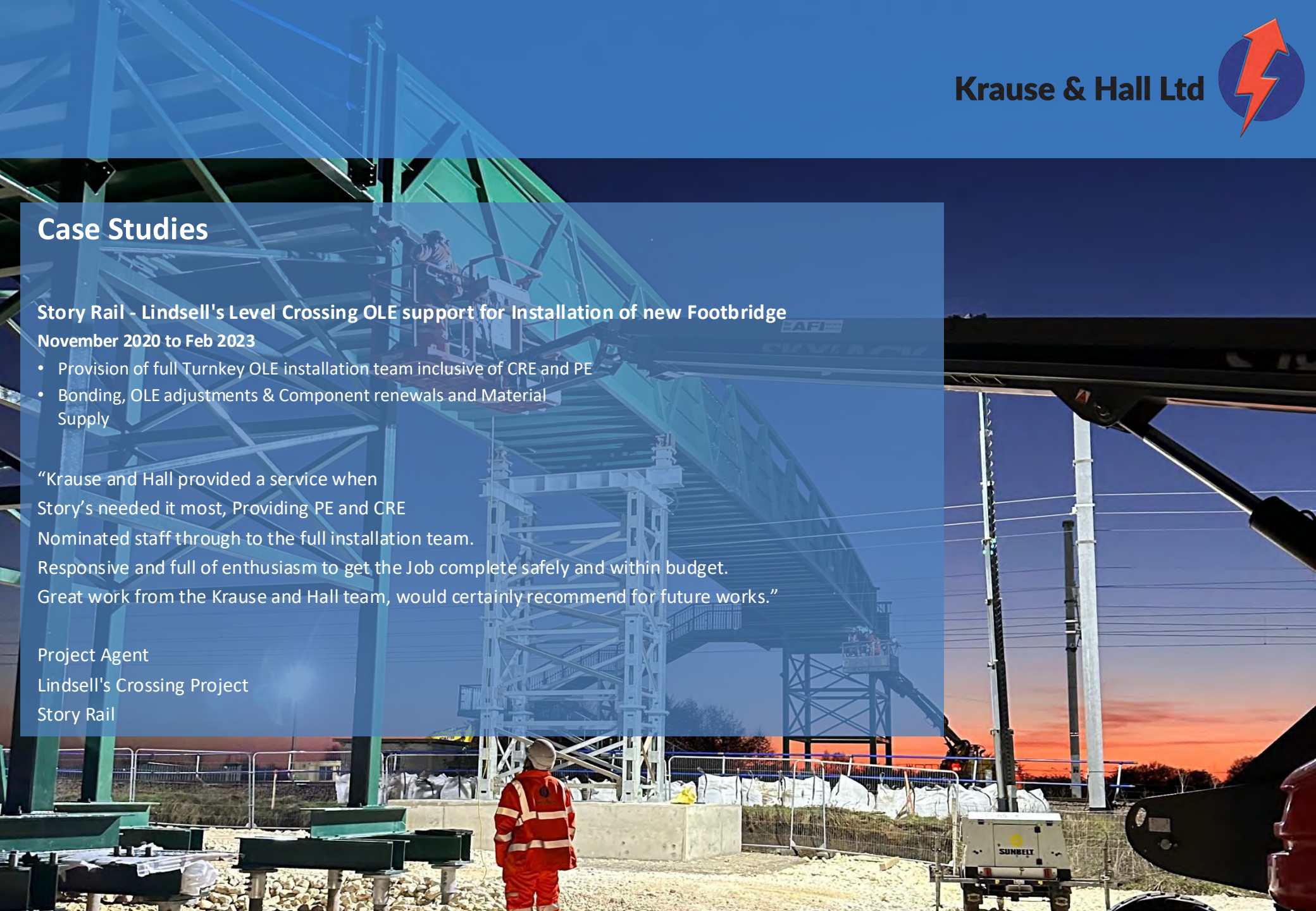
- Provision of full Turnkey OLE installation team inclusive of CRE and PE
- Bonding, OLE adjustments & Component renewals and Material Supply

“Krause and Hall provided a service when Story’s needed it most, Providing PE and CRE Nominated staff through to the full installation team. Responsive and full of enthusiasm to get the Job complete safely and within budget. Great work from the Krause and Hall team, would certainly recommend for future works.”

Project Agent

Lindsell's Crossing Project

Story Rail





Case Studies

Story Rail - Apperley Bridge OLE support for Platform Extensions

March to June 2024

- Provision of full Turnkey OLE installation team inclusive of CRE and PE under PACE
- Installation of bespoke cast in situ concrete foundations
- Installation of new OLE structures and transfers/removal of existing structures
- All Earthing and Bonding works
- Material supply and fabrication
- Works completed ahead of program
- NR12



Case Studies

Taylor Woodrow - Bletchley Depot Phase 1 February 2023 to June 2023

- Provision of full Turnkey OLE installation team inclusive of CRE – C
- All Possession and isolation planning
- Material Supply
- Installation of 4 bespoke anchor structures and mass concrete foundations
- Installation of new Piled foundations and structures
- Re-anchoring, Modification and adjustment to OLE and bonding
- Staged De-wirement of sidings and removal of circa 30 structures inclusive of large multi track portals
- Works completed ahead of program
- NEC 4 Option A
- Value £500K





Case Studies

Taylor Woodrow - Bletchley Depot Phase 2 November 2023 to December 2024

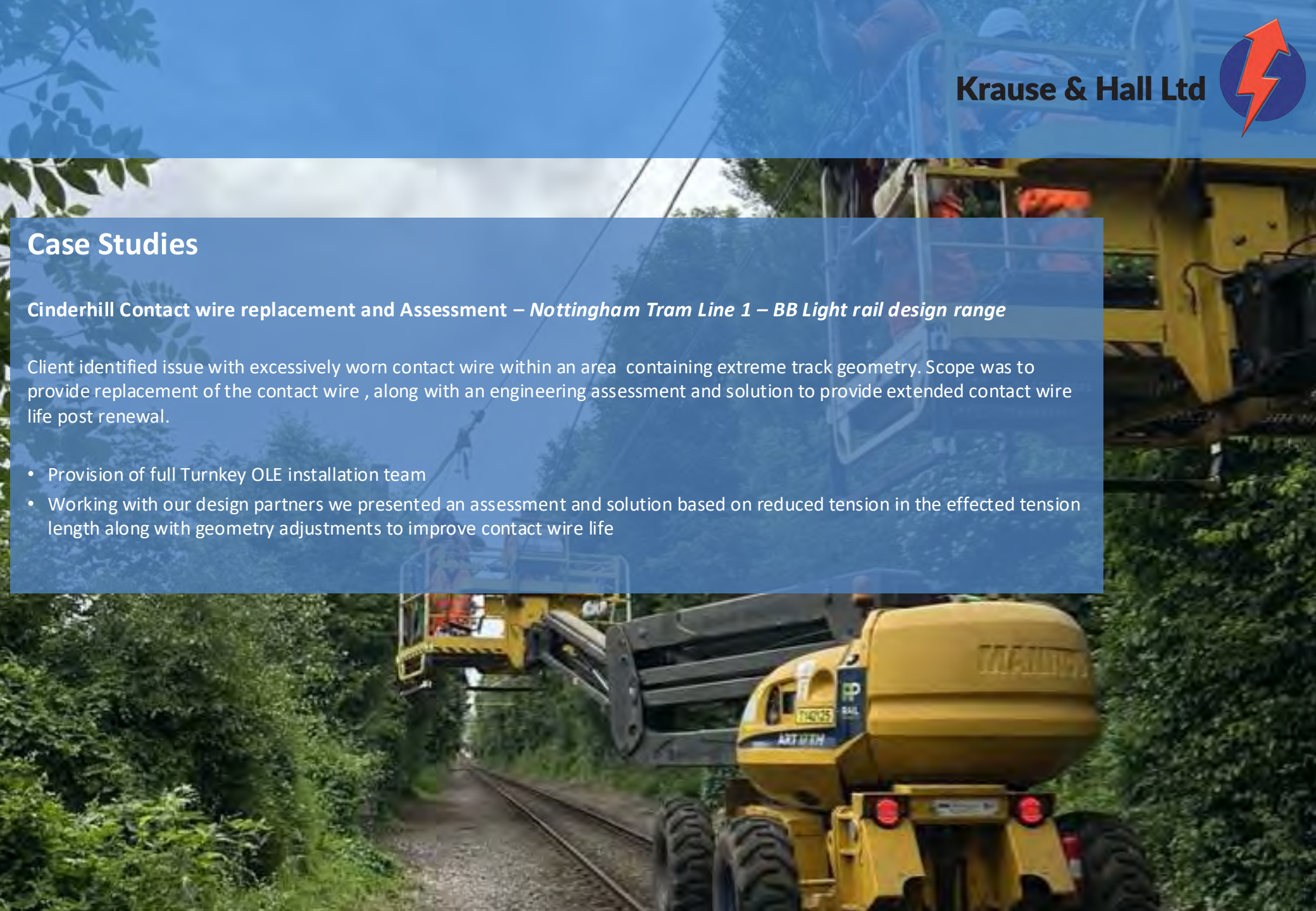
- Provision of full Turnkey OLE installation team inclusive of CRE – C
- Possession and isolation planning as required
- Material Supply and installation
 - 38 piled foundations
 - 4 bespoke concrete foundations circa 30m³ each
 - 56 new structures – ranging from STC masts through to multi track anchor portals
 - 4500m of new conductor
 - 9 Isolators
 - 10 section insulators
 - All traction bonding
- Testing and commissioning of the new depot OLE and entry into service
- NEC 4 Option A
- Value £2.5m

Case Studies

Cinderhill Contact wire replacement and Assessment – *Nottingham Tram Line 1 – BB Light rail design range*

Client identified issue with excessively worn contact wire within an area containing extreme track geometry. Scope was to provide replacement of the contact wire, along with an engineering assessment and solution to provide extended contact wire life post renewal.

- Provision of full Turnkey OLE installation team
- Working with our design partners we presented an assessment and solution based on reduced tension in the effected tension length along with geometry adjustments to improve contact wire life



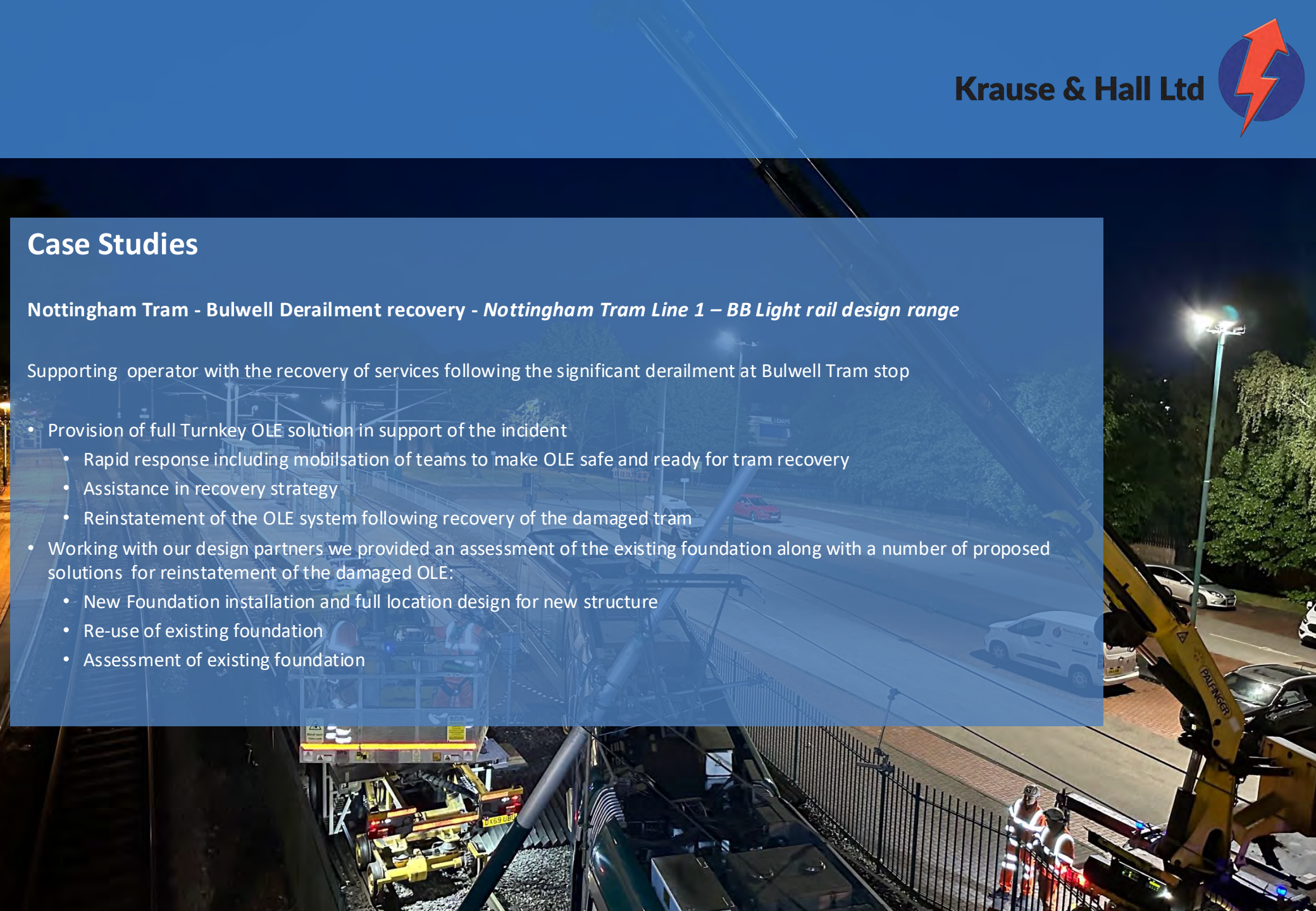


Case Studies

Nottingham Tram - Bulwell Derailment recovery - *Nottingham Tram Line 1 – BB Light rail design range*

Supporting operator with the recovery of services following the significant derailment at Bulwell Tram stop

- Provision of full Turnkey OLE solution in support of the incident
 - Rapid response including mobilisation of teams to make OLE safe and ready for tram recovery
 - Assistance in recovery strategy
 - Reinstatement of the OLE system following recovery of the damaged tram
- Working with our design partners we provided an assessment of the existing foundation along with a number of proposed solutions for reinstatement of the damaged OLE:
 - New Foundation installation and full location design for new structure
 - Re-use of existing foundation
 - Assessment of existing foundation





Case Studies

Nottingham Tram - Beeston De-wirement recovery - *Nottingham Tram Line 2 – Alstom design range*

Supporting Client with the recovery of services following the significant de-wirement caused by a road vehicle in Beeston

- Provision of full Turnkey OLE solution in support of the incident
 - Rapid response including mobilisation of teams to make OLE safe
 - Assistance in recovery strategy
 - Timely and safe reinstatement of the OLE system



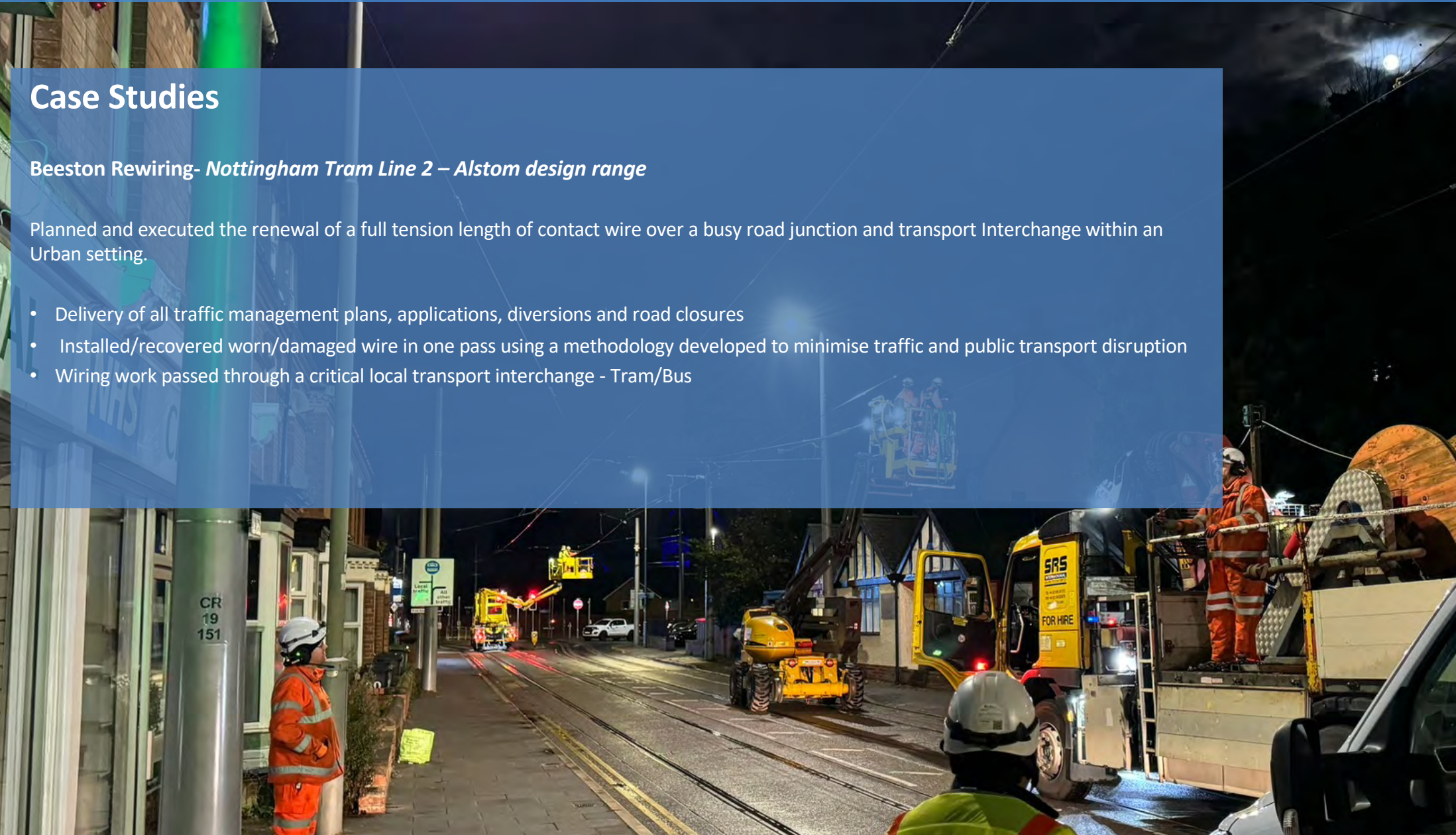


Case Studies

Beeston Rewiring- *Nottingham Tram Line 2 – Alstom design range*

Planned and executed the renewal of a full tension length of contact wire over a busy road junction and transport Interchange within an Urban setting.

- Delivery of all traffic management plans, applications, diversions and road closures
- Installed/recovered worn/damaged wire in one pass using a methodology developed to minimise traffic and public transport disruption
- Wiring work passed through a critical local transport interchange - Tram/Bus



Case Studies

Nottingham Tram - Maintenance support and Alterations (various)

Since the company's formation in 2007 we have supported the team at NET with numerous instances of infrastructure alterations necessitated by development or demolition of adjoining buildings and structures, ranging from installation of temporary structures and foundations through to wholesale transfers to new structures along with supply of staff, tools and machinery for targeted support in undertaking maintenance activities .

Summary

We can demonstrate a broad and flexible capability, working across both “on street” and ballasted track areas providing light rail clients with a Turnkey solution or labour and plant supply only.

Our teams have in-depth knowledge and experience on working on a number of OLE systems for light rail operators which can be quickly efficiently mobilised to realise clients requirements.

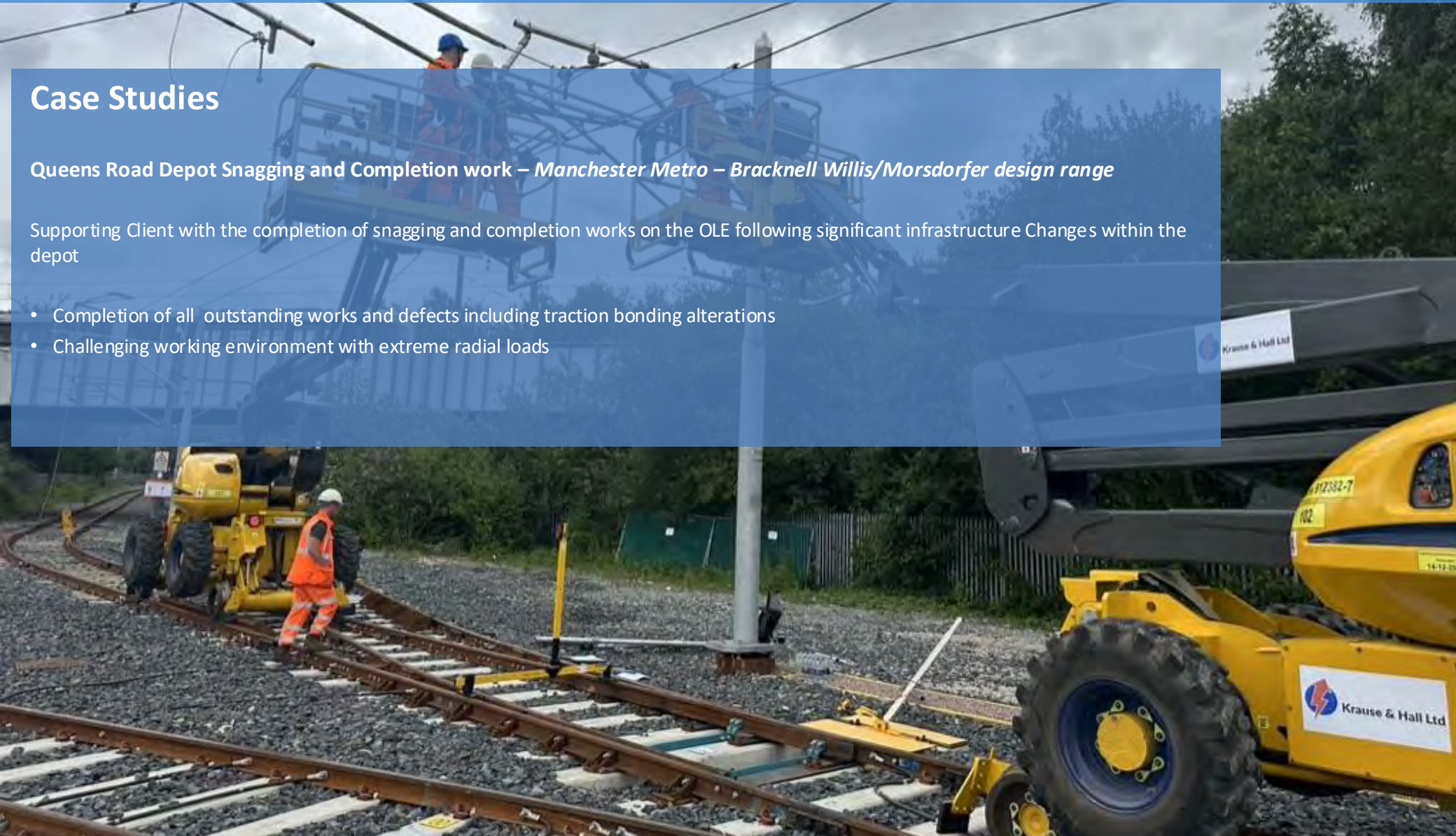


Case Studies

Queens Road Depot Snagging and Completion work – *Manchester Metro – Bracknell Willis/Morsdorfer design range*

Supporting Client with the completion of snagging and completion works on the OLE following significant infrastructure Changes within the depot

- Completion of all outstanding works and defects including traction bonding alterations
- Challenging working environment with extreme radial loads



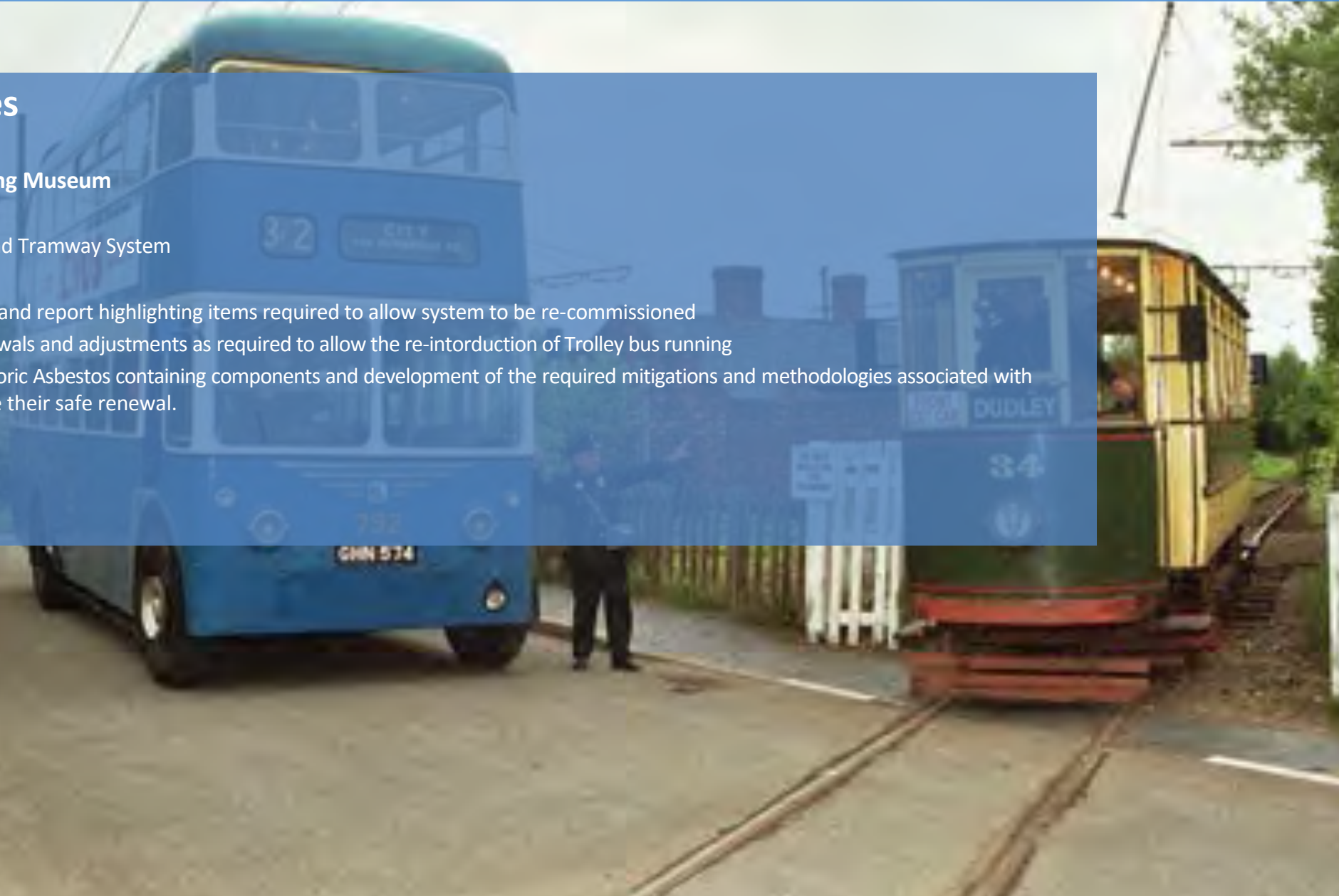


Case Studies

Black Country Living Museum

Mixed Trolley Bus and Tramway System

- Condition survey and report highlighting items required to allow system to be re-commissioned
- Undertaking renewals and adjustments as required to allow the re-introduction of Trolley bus running
- Working with historic Asbestos containing components and development of the required mitigations and methodologies associated with this risk to enable their safe renewal.





Case Studies

East Anglia Transport Museum

Mixed Trolley Bus and tramway heritage Museum

- Relocation of support pole inclusive of installation of new concrete side bearing foundation
- Provision of supporting design
- Transfer of wires

